

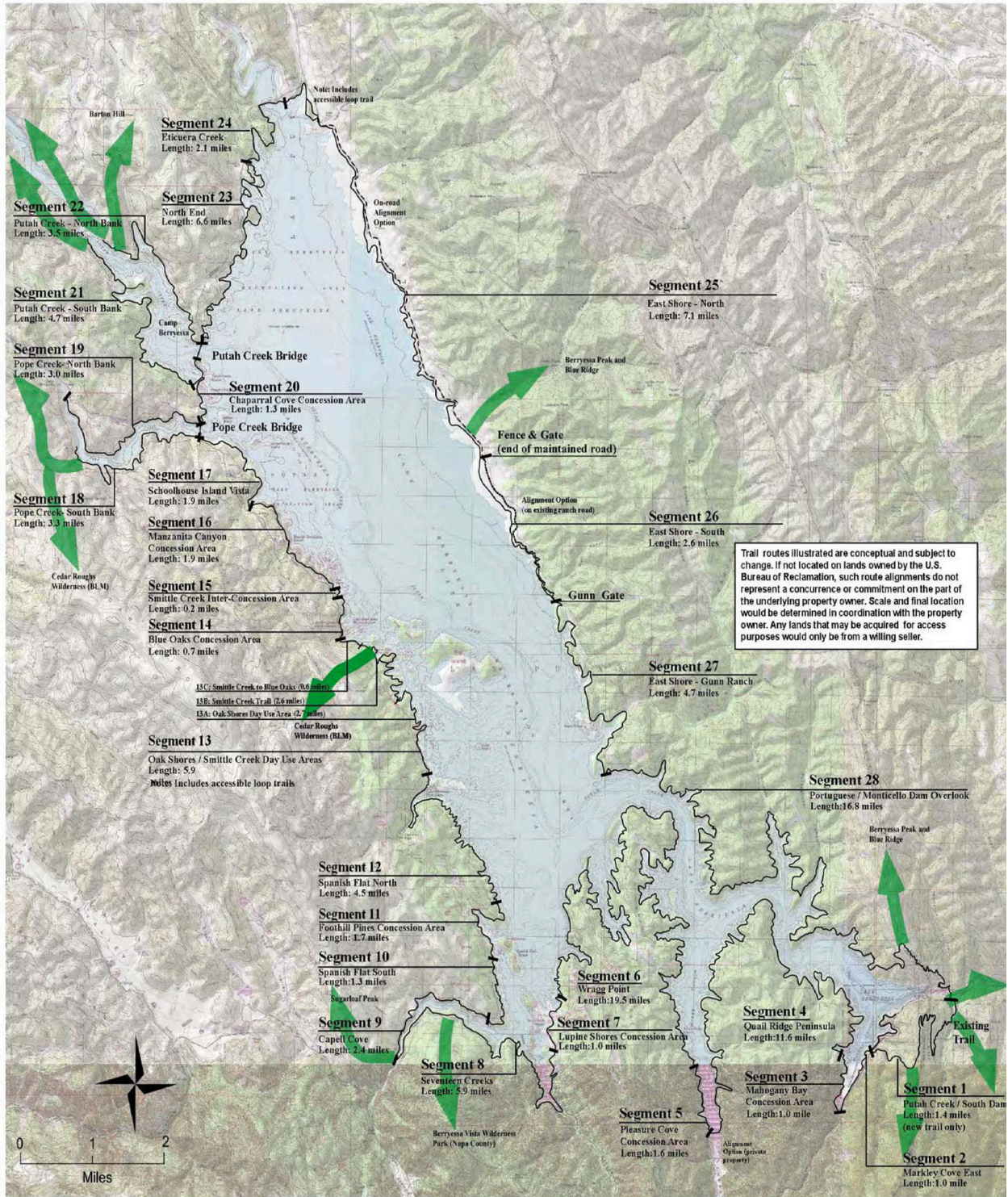
## **Trail Around the Lake?**

In 2012, the Bureau of Reclamation funded a plan to design a trail around Lake Berryessa. The final plan was well produced with thoughtful analysis and detailed conclusions and design maps. However, it proved so costly and included so many major implementation obstacles that, more than 10 years later, no coordinated action has begun and may never occur. The focus of lake advocates is to create trails accessible to the general public where access is not too constrained by geography and geology - connecting the various west shore public and private facilities, for example.

[www.lakeberryessanews.com/resources/Interesting-Stories/Shoreline-Trail-Management-Plan-copy.pdf](http://www.lakeberryessanews.com/resources/Interesting-Stories/Shoreline-Trail-Management-Plan-copy.pdf)

Per the Bureau of Reclamation, the Lake Berryessa Shoreline Trail Management Plan (TMP) is an integrated document that will guide the implementation of a continuous Shoreline Trail around Lake Berryessa. The Shoreline Trail is envisioned as a continuous non-motorized trail route for multiple outdoor recreational uses. The trail would create a hub around the lake with trails emanating from the hub and eventually connecting to adjacent public lands. The Shoreline Trail will be developed for a multiuse trail along Lake Berryessa's shoreline to benefit hikers, equestrians, mountain bicyclists, and other trail users.

Goals: Develop the Shoreline Trail to accommodate nonmotorized trail use for outdoor recreation, education, and interpretation and to provide safe travel for local residents; take advantage of the remarkable scenic, natural, cultural, and historical resources of Lake Berryessa; consider the Shoreline Trail an integral component of the Lake Berryessa suite of recreation opportunities available to the general public. Increase visitation, the quality of the visitor experience, and economic vitality for Reclamation concessionaires and the surrounding community; connect visitors to the natural environment and promote community-based resource stewardship.



# Lake Berryessa Shoreline Trail Management Plan