
The Lake Berryessa News, December, 2022

Happy Holidays!



The latest rains are a positive sign for the holiday season, but we have 46 feet to go...
more rain due today.

In Memory of a post-wildfire Christmas Past, here's the 2020 Lake Berryessa News outdoor
Christmas tree in the Berryessa Highlands.

Lake Berryessa Christmas 2020



Lake Berryessa Revitlization Process

With two new supervisors joining the Board, we hope to have a unanimous Board of Supervisors supporting the Lake Berryessa revitalization.

Publisher's Note: Supervisor Pedroza is a champion for the Lake Berryessaa community. Please do not support the silly little effort to recall him. There are better ways to spend the estimated \$250,000 this recall effort will cost.

Here's the latest on the Lake Berryessa Concessions From Supervisor Pedroza:

"After years of working with the Bureau of Reclamation, we reached an agreement and are making significant progress to allow sustainable and vibrant business investments at the lake we can all enjoy. Community outreach is planned as the environmental studies continue to advance. *Thank-you to Supervisor Dillon for her years of working together on this effort!"*

SUNTEX:

SUNTEX is the new concessionaire for Berryessa Point and is in the beginning stages of the NEPA/CEQA process. The completion date for this is December 2024 (approximately). Editor's Note: At present Suntex operates Pleasure Cove Marina.

SUN Communities:

SUN Communities is in the NEPA/CEQA process for the following sites: Spanish Flat, Steele Canyon and Monticello Shores. Additional services will be added to the site including Sheriff and Fire Services.

Additional News:

Napa and Solano County are collaborating on the Mussel Inspection Program for the Lake. Thank-you to Solano County Supervisors Vasquez and Sperring for your partnership.

Short Guide to How Social Media Works

A few years ago I was the Facebook/Twitter manager for a couple of political campaigns. We've all heard how mean-spirited social media comments can be, but to experience them directly is a bit disheartening. I even get what I call "Pointless Negative Comments" (PNCs) on my Lake Berryessa Facebook page.

Why do these people bother? Ego? Pleasure at seeing their opinion on the screen with no consequences? Releasing their nasty mental burps before they explode their heads? Many times I fell like responding, "I'm afraid you've confused me with someone who cares what you think or say."

There's a subtle form of psuedo-intellectual PNCs making the rounds. Here's an example of the type:

Post: "I prefer mangoes to oranges..."

Some Random Moron responds: "So basically what you're saying is that you hate oranges? You also failed to mention pineapples. bananas, and grapefruits. Educate yourself."

Lake Berryessa Statistics (12/3/22)

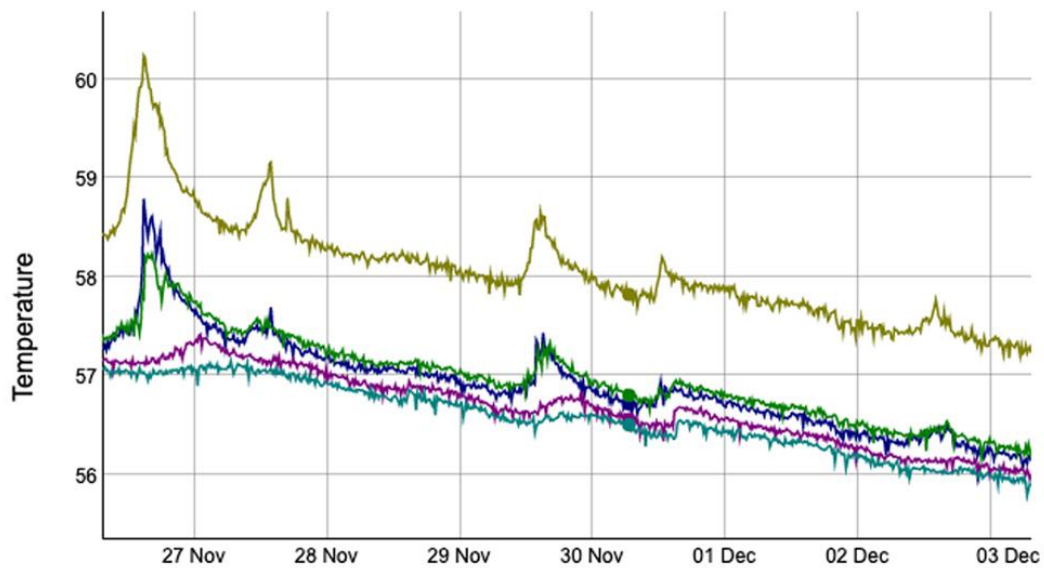
The lake is now down to 394.0 feet, 46 feet below Glory Hole, the lowest level since 1994, but appears to have stopped dropping for the moment. Rainfall at Monticello Dam is at 3.45 inches due to the latest rain on Thursday. Rainfall above the Berryessa Highlands is at 2.19 inches

Cobb Mountain rainfall is at 6.26 inches. In the northern part of the Lake Berryessa watershed, Cobb rainfall is more important to Lake Berryessa levels than rainfall at the dam.

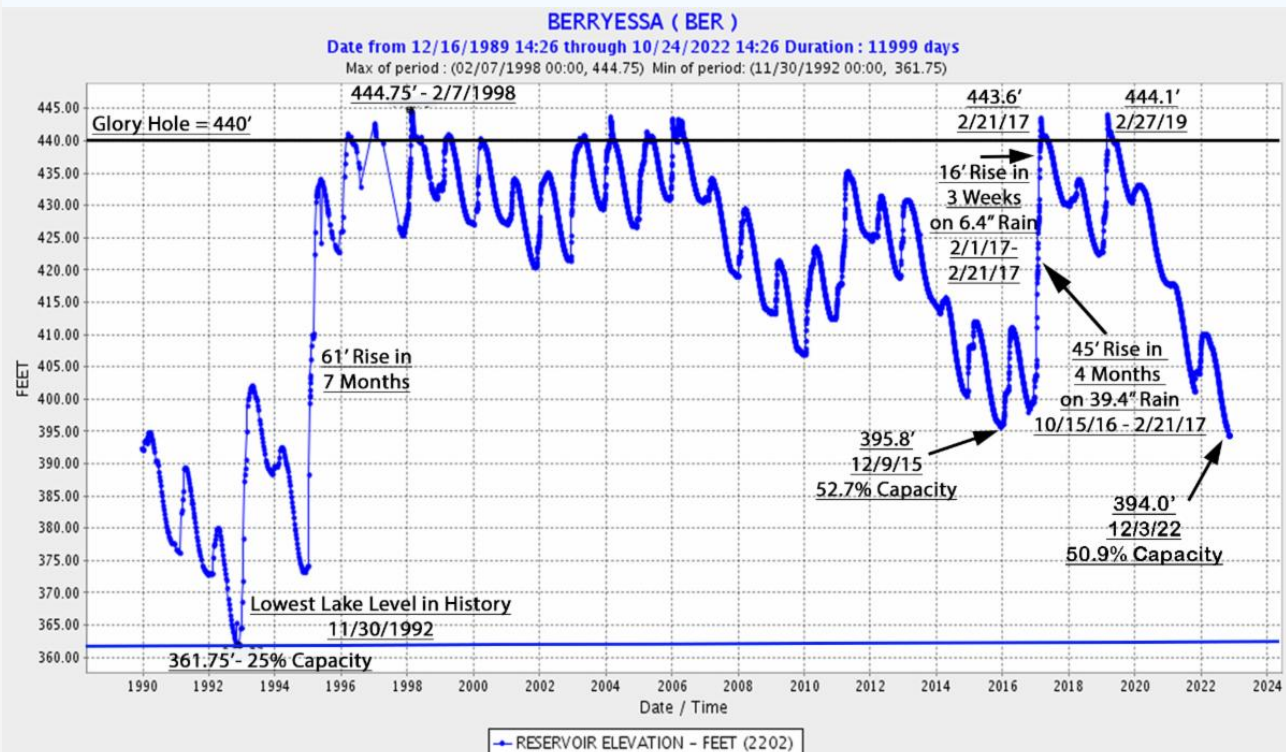
The Gamble Gauge is at 50.9% capacity.

Lake Berryessa - Temperature

2022/11/30 06:45: **1Temp01**: 57.8 **1Temp05**: 56.7 **1Temp10**: 56.8 **1Temp40**: 56.6
1Temp70: 56.5



11/29/22: Lake Level = 394.1', 45.9' Below Glory Hole



Some Oldies But Goodies to Groan At:

Q: What cars do elves drive? A: A *toy*Yoda.

Q: What is Santa's primary language? A: North Polish.

What goes "oh oh oh"? Santa walking backwards

What's the most popular Christmas wine? 'I don't like Brussels sprouts!'

What do you call a bunch of grandmasters of chess bragging about their games in a hotel lobby? Chess nuts boasting in an open foyer.

One night a Viking named Rudolph the Red was looking out the window when he said, "It's going to rain." His wife asked, "How do you know?" "Because Rudolph the Red knows rain, dear."

What do you call a reindeer that suddenly forgets how to fly? The deerly departed!

I asked my wife what she wanted for Christmas. She told me "Nothing would make her happier than a diamond necklace", so I bought her nothing.

There's nothing like the joy on a kid's face when he first sees the PlayStation box containing the socks I got him for Christmas.

If you're the president of a large corporation, nothing spreads holiday cheer to your employees like a \$20 gift certificate to Starbucks.

Remember, participating in an office Secret Santa pool is a great way to acquire a \$6 piece of trash.

Note from Supervisor Pedroza Regarding Local Road Paving

Berryessa Highlands is scheduled for a complete paving next year, Summer 2023, \$2.5 Million.



2023 Berryessa Road Improvements (from the the County Website)

The 2023 Berryessa Improvements Project will provide road rehabilitation efforts within two (2) subdivisions (the Berryessa Highlands and the Berryessa Pines), Berryessa Knoxville Road, and Spanish Flat Loop Road. The treatments at each location are currently under design. The County will provide treatment to 24 roadways within the Berryessa Highlands and three (3) roads within the Berryessa Pines. There are 8.1 miles of Berryessa Knoxville Road that will be sealed, between Spanish Flat Loop Road and Pope Canyon Road. Additionally, all of Spanish Flat Loop Road will be treated.

Just in Time For Christmas!
LAKE BERRYESSA TIE DYE

"The Happy Corner"

www.lakeberryessatiedye.com/

Hi! My name is Jewel. I live at Lake Berryessa, Napa CA. If you've ever met me, it was probably on a corner in the mountains at my handmade tie-dye stand. I feel like the luckiest girl alive to be able to sell awesome tie-dyes, in the best community on Earth, while meeting the most amazing people from all around the world.



Around the 4th of July in 2020, some kids in the neighborhood and I decided to make some tie-dyes and sell them on the corner just for fun. We thought it would just be a one-time thing, something to do on a hot summer day. Little did we know. On that day, we discovered this one thing: People who stop to buy tie dye are AWESOME! We had so much fun meeting lake visitors and everyone else that we just had to come back the next day. And the next. And the next. And here we are, over two years later, still making tie-dyes and still eager to see which car will round the corner next.

CONTACT

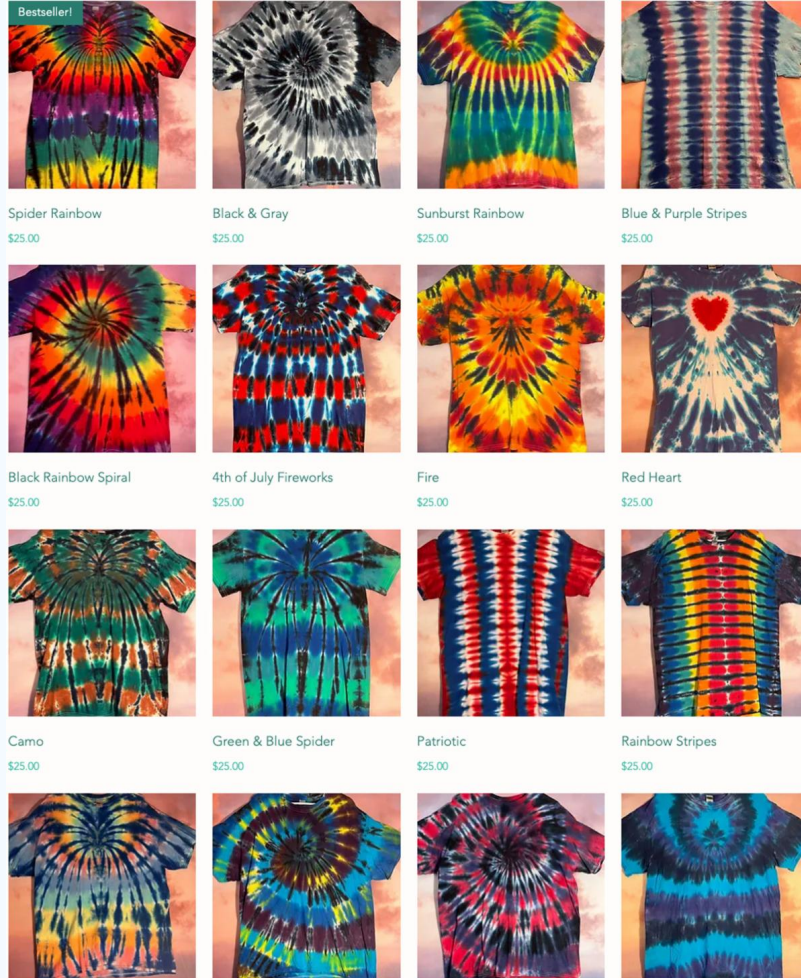
lakeberryessatiedye@gmail.com

jewelkenny02@gmail.com

707-580-2345

Instagram: @lakeberryessatiedye

Here are samples of the dozens of neat designs we have for sale.



We also have our cute Lake Berryessa mascot for you: Little Beary Essa!
www.lakeberryessatiedye.com/product-page/lake-berryessa-teddy-bear



A single, devastating California fire season wiped out years of efforts to cut emissions

Decades long studies have shown that global climate change is accelerated by rising CO2 emissions in the atmosphere. But a nearly two-decade effort by Californians to cut their

emissions of planet-warming carbon dioxide may have been erased by a single, devastating year of wildfires. The contribution of the 2020 wildfires becomes almost like a new sector of emissions in the economy - about double the reductions. A study found that wildfires were second only to transportation as the state's primary source of planet-warming gases in 2020, ahead of industry and electrical power generation. Many strategies to mitigate climate change are based on reforestation - simply planting huge numbers of trees.

In June 2019, the six jurisdictions in Napa County took action regarding the countywide commitment to address climate change and in 2020 formed the Napa County Climate Action Committee (CAC). But how do you practically fight climate change with thousands of acres of forest burning around you?

Bringing CO2 concentrations back to safe levels, many scientists believe, will require the extraction of a significant amount of CO2 from the atmosphere, known as negative emissions technologies (NETs). One of these methods is known as biochar.

One local company leading the biochar effort in Napa County is NapaChar.

[\(https://napachar.com/\)](https://napachar.com/)

Napachar aims to bridge wildfire defense efforts with sustainable viniculture practices to create a greener, more resilient Napa Valley. Founded in eastern Napa county, Napachar converts woody waste from vineyard management and local forest fuel-reduction efforts into Biochar, one of the richest soil amendments and most stable forms of carbon capture available today.

Biochar is a remarkable soil amendment for grape growing. In particular, it increases grape production and grape quality by aiding water and nutrient retention in the soil. And because biochar does not degrade it does not require frequent reapplication. The increased grape production can result in a rapid return on investment. (Here's a link to a report from the Department of Water Resources with data from a 7-year experiment adding biochar to Pinot Noir vines in Salinas that saw a 30% increase in grape production:

<https://pacificbiochar.com/wp-content/uploads/Final-Oasis-Vineyard-Biochar-Field-Trial-Science-Report-2.pdf>).

Napachar Goals:

- Assist you with fire defense and fuel-reduction efforts;
- Convert pulled vines and other woody waste into biochar on site;
- Capture carbon and clear wood waste with minimal emissions;
- Supply you with biochar to greatly improve your soil's water holding capacity and reduce nutrient run-off.

Napachar

**Bridging wildfire defense efforts with
sustainable viniculture practices
to create a greener, more resilient Napa Valley**

VINICULTURE VS. VITICULTURE: WHAT'S THE DIFFERENCE?

What do these terms refer to and how do we understand the difference? The scientific term “viticulture” refers to the science, study and production of grapes. The term “viniculture” also refers to the science, study and production of grapes. However, when we hear VINICULTURE we know the process is referring specifically to grapes for wine.



EVAN KILKUS
707-210-4897
Evan@CompleteWildfireDefense.com
www.CompleteWildfireDefense.com

Wildfire Risk Assessments
Defensible Space/Land Management
Home Hardening Upgrades
Water System Design & Install
Community Project Planning

20 for 23 Program Continues

The Lake Berryessa News Needs Your Support in 2023

Thanks to those of you who have already donated. We still need your donations to publish the print version of the Lake Berryessa News next year.

Only the Lake Berryessa News provided almost daily reports of lake issues, water levels, lake revitalization process reports, and other items of interest to Lake Berryessa supporters on its social media sites and in its print version. Although you may follow the Lake Berryessa online, thousands of other folks read the print version. I want to provide that opportunity for at least six months (April - September) of the year.

If you like the Lake Berryessa News in all its forms please send a donation check of \$20 (or more if you feel so inclined) made out to Peter Kilkus (not the Lake Berryessa News) and mail it to Peter Kilkus, 1515 Headlands Drive, Napa, CA 94558. If you trust the US Postal Service, you can stick a crinkly old \$20 bill in an envelope with your information and send it to the same

address. You can also use Venmo or Paypal if you wish. My account is under the name Peter Kilkus. You can email me at pkilkus@gmail.com. (Note: Your donation is NOT tax deductible)

Your decision to support the Lake Berryessa News will show your vote of confidence in the future of the Lake Berryessa community. I'll continue to do my best to keep you informed about every detail affecting the lake community.

Thanks, Peter

December Headlines

Americans grow extremely concerned about Chinese protests after learning they may delay delivery of new iPhone

Nation's Old Men Announce Plans To Wake Up At 5 A.M. And Argue With Other Old Men Around Table At McDonald's

Bowl Of Soup Brings Man's Lifetime Carrot Total To 11

Rihanna Admits She Just Uses Whatever Makeup On Sale At Walgreens

Area Man Hospitalized With Injury Suffered While Trying To Explain How He Is Pro-Choice About Vaccines But Not Pregnancy

Activist Rescinds Denunciation Of Black Friday As "Exploitative Commercialism" After Scoring 50-inch TV For \$29.99

Lauren Boebert Withdraws Statement Of Grief Over Club Q Shooting When Told It Is Not The Q She Thought It Was

Fight At Local Airport - Emotional Support Raccoon Attacks Emotional Support Chicken

Disgraced New Orleans jazz musician doesn't know 'When the saints go marching in'

House Republicans Looking Forward to Making Sure Absolutely Nothing Gets Accomplished in DC

"You could keep your Metaverse avatars," Mark Zuckerberg reassures 11,000 laid off workers



Amber Payne
 Senior Sales Associate
 CalDRE#01302244
 amberpaye@corcorangl.com
 www.AmberPayne.net

<https://lakeviewhomeforsale.com>



2,200 Sq. Ft.
3 Bedrm, 2 Bath
**Formal living room/
 dining room**
**Open kitchen with
 bar seating**
**Attached 2 car
 garage**
**Prefer selling mostly
 furnished**
\$665,000

The ideal home to enjoy lake living life! Stunning lake and mountain views. Large deck for viewing and family BBQ's. **Bonus!** 25ft Pontoon boat and 16ft 1997 Klamath fishing boat & generator included!



Just Listed - 104 Parkview Lane

So much to this property! Nice single story home on a large flat corner lot! Spacious home with living room and family room. Open kitchen. Primary suite with upgraded tile shower with glass surround, new vanity. Kitchen with gas stove and stainless steel fridge, custom tile backsplash. Newer A/C, new siding, Washer/Dryer in Laundry Room. Outside features extra large attached 2 car garage. Boat/RV Parking and storage for gas and toys! Covered awning in rear yard with low maintenance landscaping. Water softener and filtration system, ice machine, outside speakers, outside TV. Property is graced by palm trees. Close to Steele Park Recreation area! Enjoy the lake life!

Visit www.ParkviewLn.com.

\$528,000

corcoran
 GLOBAL LIVING

104 Parkview Lane, Napa



Amber Payne
 1302244 (CA)
 707-235-1124 (M)
 amber.payne@corcorangl.com
 www.AmberPayne.net

See a photo slide show at: <https://youtu.be/20XSkc4dpr8>



Amber Payne

Senior Sales Associate

CalDRE#01302244

amberpaye@corcorangl.
com

Thinking of BUYING
or SELLING?

<https://lakeberryessaland.com/>

253 Sugarloaf Dr, \$87,500

1013 Arroyo Linda Ct, \$89,500

259 Sugarloaf Dr, \$87,500

1102 Arroyo Grande Dr, \$34,999

1268 Steele Canyon Rd, \$75,000

1057 Arroyo Grande Dr, \$160,000

1121 Steele Canyon Rd, \$44,000

814 Bahia Vista Ct, \$54,000

817 Bahia Vista Ct, \$44,000

1122 Rimrock Dr, \$49,900

208 Manzanita Ln, \$132,000

1032 Eastridge Dr, \$130,000

1042 Westridge Dr, \$80,000

1276 Steele Canyon Rd, \$85,000

1046 Headlands Dr, \$120,000

1053 Headlands Dr, \$60,000

Sunnyhill Ln #148, Circle Oaks, \$15,000

32 Catalpa Ct, Circle Oaks, \$56,000

Build Your Dream Lake House on a View Lot:

<https://lakeberryessaland.com/>

Fishing in Putah Creek By The Old Town of Monticello Before the Dam Was Built

Turns out there is very little information available. Thanks to those who responded to my Lake Berryessa News Facebook request (<https://www.facebook.com/Lake-Berryessa-News-114810958535085/>). People mentioned German brown trout, rainbow trout, catfish, bass, and a few other species. The Napa County Historical Society did a search that discovered a couple of old newspaper articles.

May 14, 1926 - Napa Register

TROUT RAISING IN THE PUTAH CREEK URGED

The establishment of trout breeding ponds along Putah Creek and a proposed irrigation reservoir across Putah Creek in upper Berryessa Valley, will be recommended to the State Fish, and Game Commission by Napa Sporting Club, it was decided at the club's meeting last week. The commission recently announced intention of operating such ponds for the

propagation of trout, particularly German brown trout which are popular with fishermen.

Napa Register June 5, 1891











On Saturday last, W.E. Thissell and some Japanese in his employ went seining in Putah Creek, and in two hours caught over 400 pounds of fish, one tipping the scaled at ten pounds. At one draw of the seine, they caught over 300 small carp, which they threw back into the creek. That was right; the small carp should be protected, and in a few years the stream will be full of them.

I spoke with Bud Gardner about fishing in Putah Creek as a kid. He and I are the same age and we were in the same grade at the same time - but we grew up in parallel universes. He was a country boy who went to grade school in the Town of Monticello in the years just before the dam was built. I was a city boy who grew up in Chicago and graduated from 8th grade in 1958 - the year Lake Berryessa started filled.

Whereas Bud and his friends rode their bikes right over to the creek next to town, caught fish, roasted doves for lunch, and slept overnight on a small island in Putah Creek, I had to take a public bus for a half-hour ride with my fishing gear to get to Lake Michigan. Bud mentioned pike, carp, trout and small catfish. One thing of interest was that he did not see many folks fishing the creek at the time. Apparently hunting was more popular.

The Bureau of Reclamation published a detailed brochure about which fish species inhabit the lake now. Download it at:

<http://www.lakeberryessanews.com/miscellaneous/the-fishing-page/bor-fishing-brochure.pdf>

<u>Crappie and Bluegill</u>	<u>Trout and Salmon</u>	<u>Bass</u>	<u>Catfish</u>	<u>Other Fish at Berryessa</u>
 Black Crappie (<i>Pomoxis nigromaculatus</i>)	 Chinook Salmon (<i>Oncorhynchus tshawytscha</i>)	 Largemouth Bass (<i>Micropterus salmoides</i>)	 Channel Catfish (<i>Ictalurus punctatus</i>)	 Carp (<i>Cyprinus carpio</i>)
 Bluegill (<i>Lepomis macrochirus</i>)	 Steelhead/Rainbow Trout (<i>Oncorhynchus mykiss</i>)	 Smallmouth Bass (<i>Micropterus dolomieu</i>)	 Bullhead Catfish (<i>Ictalurus nebulosus</i>)	 Sacramento Squawfish (<i>Ptychocheilus grandis</i>)
<p>Crappie and bluegill, collectively known as "panfish", are two of the more popular game fish in Lake Berryessa. Although they are small in size, they remain popular for anglers because of high daily limits for both fish.</p> <p>Bluegill, and their relative the red-earr sunfish (<i>Lepomis microlophus</i>), are the smallest of Berryessa's game fish (less than 5 pounds). These ideal beginner fish exist in high abundance and are easily caught in nearly any shallow cove, weed bed, or dock area. They generally live in small schools, and feed on native flies and small minnows. Bluegill are best caught with a bobber and a small hook holding a piece of nightcrawler or minnow. Although they are most prevalent during the warm summer months, they can be found year-round in most shallow areas (less than 6 feet).</p> <p>Crappie (pronounced <i>crap-ee</i>), are slightly larger than bluegill (1.5 pounds maximum), and are popular because of their flaky, white meat. These fish can be hard to find, especially during the summer when they move to deeper water. However, as any angler would report, where there's one, there are more. Crappie run in schools, making large crappie catches relatively common. Crappie are best caught in the spring, under coverings such as a dock, vegetation, or a fallen tree. For the best luck, try using a red and white mini-jig or a bobber with a minnow to lure these elusive fish.</p>	<p>Trout and salmon, traditionally regarded as cold water fish, are inhabitants of the deep, open waters of Lake Berryessa, and can often reach "trophy" sizes of more than 10 pounds (the average size is 2-4 pounds). These fish are best caught by trolling - dragging a spinner or minnow on a line behind a slow moving boat in open water - a method made easier with the help of a downrigger or fish finder. During the spring, trout and salmon swim at depths around 15-20 feet. In the summer they are generally found below 40 feet.</p> <p>Another method used to catch trout or salmon is to drift a minnow, nightcrawler, or salmon eggs in open water using a bobber. Shore fishing has proven less successful for these fish, but it is possible during the spring when the water temperatures are still cool. Fly fishing is rarely practiced at Lake Berryessa, but it is possible in Upper Putah Creek, and is extremely popular below the dam in Lower Putah Creek. Time, patience, and experience are all necessary to catch these fish.</p> <p>Rainbow trout are the most common trout species; however brown trout (<i>Salmo trutta</i>) and brook trout (<i>Salvelinus fontinalis</i>) also exist. Landlocked steelhead (pictured) are native to the region, and spawn in Upper Putah Creek during the spring months. All other trout are stocked annually. Several other types of salmon also exist in the lake: chinook salmon and kokanee (<i>Oncorhynchus nerka</i>), which were recently introduced near Markley Cove.</p>	<p>Because of the technique and skill required to catch these fish, and the thrill of hooking a large one, many anglers consider bass to be the ultimate game fish of Lake Berryessa. The largemouth (15-20 inches) is slightly larger than the smallmouth (12-18 inches), and both fish spawn in the spring, when they can be found feeding in shallow areas for most of the day.</p> <p>To fish for bass, it is important to know some basic information about their feeding habits. In the summer, bass generally spend their days and nights resting in deeper water, but they move to shallow warm water to feed in the morning and evening. These areas usually have vegetation or other structures that attract minnows, flies, or other small creatures which bass feed on. In addition, these shallow areas tend to be close to the deep waters where bass rest - therefore, many anglers fish for them along points or steep ridges, and the shallow vegetated areas along the edge. Fishermen often say that rocky points, floating vegetation, docks, or coves filled with trees are prime bass habitats.</p> <p>Another tricky part about bass fishing is finding the right bait. Every angler seems to have their own belief about the best bass lure. The most popular seems to be floating plugs, spinner baits, rattling lures, plastic worms, or a simple live worm or minnow. Whichever bait you use, fishing for bass is sure to be an exciting experience if you keep their feeding habits in mind.</p>	<p>Catfish, the bottom feeders of Lake Berryessa, are abundant and easily caught in nearly every part of the lake. The channel and bullhead catfish (pictured) are the most common species, although the white catfish (<i>Ameiurus catus</i>) also exists. Dead organic matter is the normal diet of catfish. The average size for these fish is 2-4 pounds, however they can grow enormous in the deeper parts of the lake, often exceeding 20 pounds.</p> <p>Many anglers say that catching catfish requires the least skill of any type of fishing. The one method which nearly all anglers use to catch catfish is to simply sink natural bait to the bottom of the lake, keep the line taut, and wait for a bite. The baits most widely used include nightcrawlers, chironomid larvae, clams, hot dogs, or anything with a strong odor. Placing a small bell or bobber at the end of a taut line, which alerts the angler to the fish strike, makes fishing for catfish a carefree and wildly successful experience.</p> <p>There are a few feeding habits of catfish that an angler should keep in mind. Although they feed all day long, catfish are most active during the night, which is why anglers generally wait until the sun sets to lure these fish in shallow water (10-20 feet). If you do fish for catfish during the day, keep in mind that they will be best found in deeper water (30 feet or more). Whichever way you fish for catfish, you will likely be surprised by the good luck you will have here at Lake Berryessa.</p>	<p>Although not generally popular among anglers, Lake Berryessa supports several other types of fish besides the common game fish. The most prevalent of these is the carp, a large orange colored fish, in the same family as goldfish, which feed on organic matter. Originally from Asia, carp are the most widespread introduced fish species in U.S. lakes and streams, and tend to compete with native fish for food and space. Carp can often be seen circling among the weeds in nearly every shallow cove around Lake Berryessa. They feed by stirring up the mud and capturing the organic matter which escapes. One of their favorites is fish eggs, which makes them especially unpopular among anglers. Although often regarded as inedible by local anglers, carp are considered a delicacy in many cultures, and put up a thrilling fight when hooked.</p> <p>Another fish which Berryessa supports is the native Sacramento squawfish, often referred to as the "pike minnow". These large silver fish are actually giant minnows, and often fool anglers who are pursuing the more popular trout or bass. They are often considered inedible because of their bony mouth, but, like the carp, they put up a strong fight for the angler who hooks them.</p> <p>Berryessa contains a wide array of minnows, including the golden shiner (<i>Notemigonus crysoleucas</i>) and the darters (shad (<i>Dorosoma petenense</i>)). Lake Berryessa's waters also support many other species of fresh water organisms including crayfish, clams, and others.</p>

In some ways it doesn't get any better than this. This property was literally the first property sold in the Berryessa Highlands more than 50 years ago and has never been on the market. It has views, land, a beautiful home, a pool, and more.

\$1,850,000



Amber Payne

Senior Sales Associate

CalDRE#01302244

amberpaye@corcorangl.com

www.AmberPayne.net

December Horoscopes

Aries (3/21-4/19): Armchair politicians will affect your life today as they rise from their dank pits and begin to conquer the known world.

Taurus (4/20 – 5/20): Catch-22 is better in at least 2 ways than Catch-20. Don't be caught in the Catch-20 loop.

Gemini (5/21 – 6/21): LEDs may come to the rescue for your today, shining fluorescently to the answer you truly seek.

Cancer (6/22-7/22): Presenting yourself with home-made cardboard awards is probably not the sanest way to go about giving yourself a morale boost.

Leo (7/23-8/22): - Make sure you have a

Libra (9/23-10/22): Today is not your lucky day. It's tomorrow instead! So that's something to look forward to whilst your picking up your teeth with your broken arm.

Scorpio (10/23-11/21): Waiting for important email will take precedence over waiting for junk mail for the first time today.

Sagittarius (11/22-12/21): The darkness you experience when you close your eyes might be accompanied by a low demonic growl today.

Capricorn (12/22-1/19): Don't be embarrassed by your actions today, embrace your flamboyant side.

special "getaway" persona that you can adopt at any given moment. Always pretending to be a cat might work.

Virgo (8/23-9/22): Music is likely to help you through today, so try to listen to as much as possible.

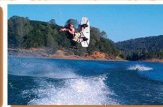
Aquarius (1/20-2/18): Avoid the temptation to change your ways, lest you become half the person you are today.

Pisces (2/19-3/20): A close acquaintance will come to you for advice very soon, and it may help if you keep that iPod playing in one ear while you hear him out.

BOAT & JET SKI RENTALS



LAKE BERRYESSA BOAT & JET SKI RENTALS



**NOW RENTING TO CUSTOMERS 18 YEARS & OLDER!
Newest & Most Dependable Equipment!**

**We Also Rent Tubes, Wakeboards, Skis,
Wake Surfboards & Kneeboards**

**4420 Knoxville Road
Next to the Spanish Flat Village Center**

Reservations Recommended

707-966-4204
lakeberryessaboats.com

BIG city speeds with SPECTACULAR views.

ValleyInternet

Locally Owned
& Operated
Since 2004.

From towers on hilltops we provide high speed, reliable, and affordable internet. Enjoy the perks of "big city" speeds and knowledgeable techs who understand the beautiful landscape we call home.

ValleyInternet Connecting the Countryside.™

SCHEDULE A FREE SITE SURVEY
VALLEYINTERNET.COM
707-422-1200



BERRYESSA BOAT . JET SKI . RV REPAIR & STORAGE

4420 KNOXVILLE ROAD | 3 MIN NORTH OF SPANISH FLAT RESORT

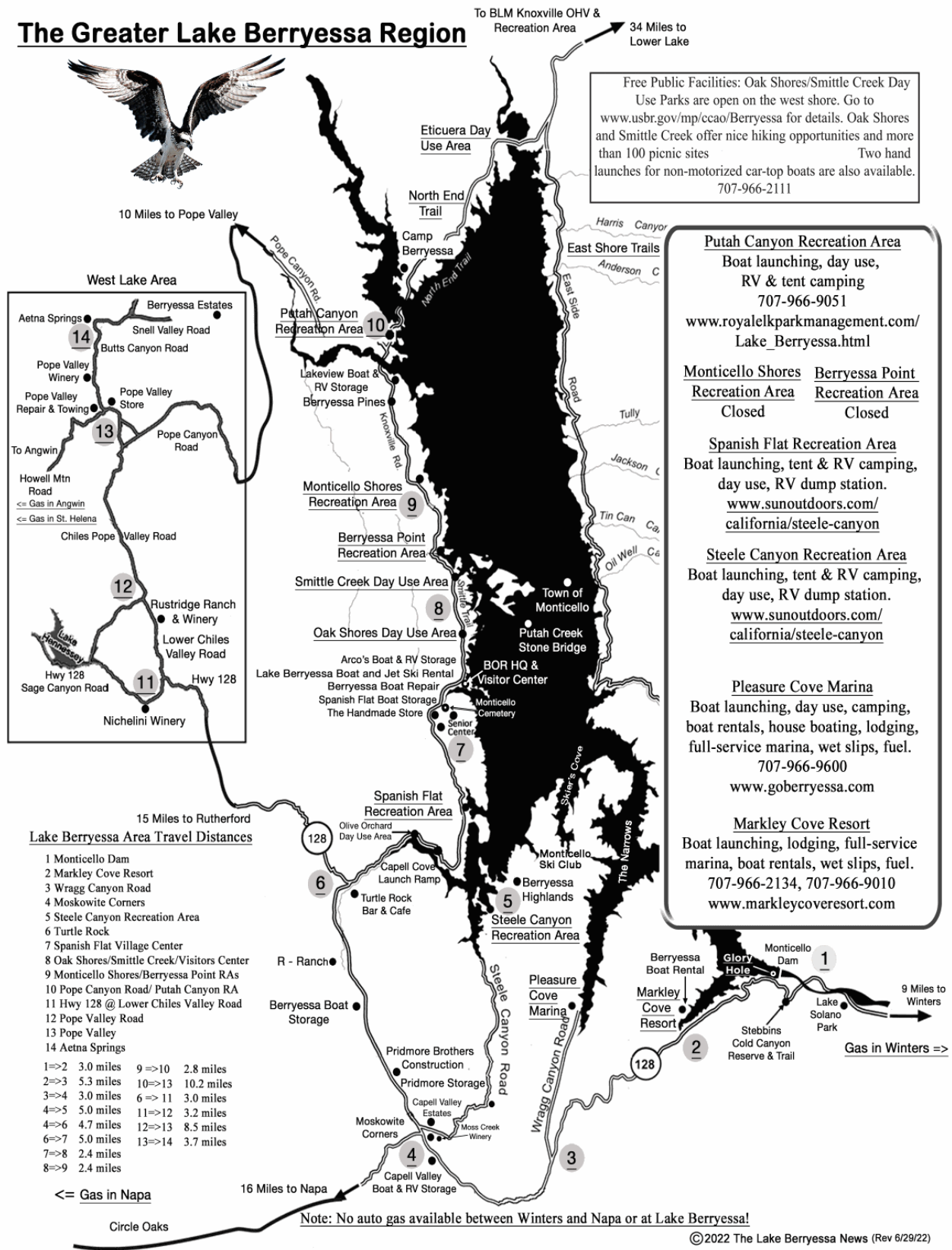
We offer quality repairs and a gated storage facility. We service all makes and models of Boats, Jet Skis, and RVs. Whether you need a basic tune up, rebuilt engine, gel coat or upholstery, we are your best choice. We are Mobile too, land or water, we can come to you! Outdoor Storage from \$50 per month is available. Our Parts Department is available to order anything you need, whether a battery or an engine. Proshop coming soon with basic boating supplies and hot new products for fun on the water!!

berryessboatrepair@gmail.com | 707.966.9954



Updated Lake Berryessa Map (June 29, 2022)

The Greater Lake Berryessa Region



Peter Kilkus | 1515 Headlands Drive, Napa, CA 94558 | 415-307-6906 | pkilkus@gmail.com



The Lake Berryessa News Special Rain & Snow Report, 12/12/22

Happy Holidays!



In Memory of a post-wildfire Christmas Past, here's the 2020 Lake Berryessa News outdoor Christmas tree in the Berryessa Highlands.



Lake Berryessa Rainfall vs Level vs Capacity - A Short Tutorial (12/12/22)

Peter Kilkus

Everyone is excited by the continuing rainfall at Lake Berryessa. And there was snow this morning on Berryessa Peak! The lake is now at 394.4 feet - 45.6 feet below Glory Hole and has risen almost 4 inches during the last few days. The lake had stabilized at the 394.1 foot level for the last week - 45.9 feet below Glory Hole. The lake watershed is at a saturation point and a level where it should start rising at about 1 foot per inch of rain. Since no rain is expected for the next week, we'll see how high the lake gets with continued runoff.

Last year at this time the lake was at 404 feet - 36 feet below Glory Hole. We had a wet December - 15 inches by January 1. But then we had no rain from January 5 to March 4 with only a few sprinkles after that - a bad rain season ending at 18.7 inches. That total would have helped but what rain we got always fell on dry ground and we never had any real runoff.

Some folks use a rule of thumb that the lake increases a foot in level for every inch of rainfall after the ground has been saturated by 2-3 inches of rain and runoff begins. This easy to remember rule is not completely accurate since the relationship between the lake level and its storage capacity is not linear. The lake profile is roughly a V-shaped bowl (with peaks and

valleys and inlets and large flat areas), which means that the higher the water level gets the more rain is needed to raise it further. It takes about 25% more rain to go from 430' to 440' than it does to go from 390' to 400'.

From December 1 to December 11, rainfall at the dam was 3.9 inches. From 12/1 to 12/9 the lake level stayed constant at about 394.1 feet. From 12/9 to 12/12 the rainfall was 1.9 inches and the lake rose from 394.1 feet to 394.4 feet - about 3.6 inches. The lake level continues to rise slowly even though the rain has stopped but runoff continues. So the first 2 inches of rain in December combined with the previous November light rains (there was no rain in October) was enough to saturate the ground and allow runoff to begin.

Rainfall at Monticello Dam is now at 6.97 inches. Rainfall above the Berryessa Highlands is at 4.93 inches. Cobb Mountain rainfall is at more than 10 inches. In the northern part of the Lake Berryessa watershed, Cobb Mountain and Middletown rainfall is more important to Lake Berryessa levels than rainfall at the dam.

One reader asked, "If 5 inches of rain have fallen on the lake itself, why hasn't the lake come up 5 inches?" If 5 inches of rain had only fallen on the surface of the lake, the lake would have come up 5 inches. But that's not how it works. It takes at least 2-3 inches of rain (measured at the dam) to saturate the ground before we get any runoff around the lake. The rain and runoff will vary by location.

The Lake Berryessa watershed comprises 568 square miles of land with varying rainfall totals due to location and geography. The lake level measurement is an arbitrary relationship to the rainfall at the dam since rainfall at the dam is one of the few actual data points we have. The rainfall on the lake and on the rest of the watershed is averaged into this relationship. For example, when the rainfall at the dam hit 5 inches last week, the rainfall total at Cobb Mountain in the northern part of the Lake Berryessa watershed had hit about 9 inches.

At this level, since the lake is a v-shaped bowl, the lake goes up "about" 1 foot per 1 inch of rain. When the lake reaches the 420 foot level the lake then goes up "about" .7 inches per 1 inch of rain.

Some folks have asked me what the Gamble Gauge represents. Since it is a measure of capacity you could assume it's how full the lake is - and you'd be right! I named it after my East Side rancher friend, George Gamble, who likes capacity (how much water is in the lake) rather than lake level as the best understanding of the real water situation.

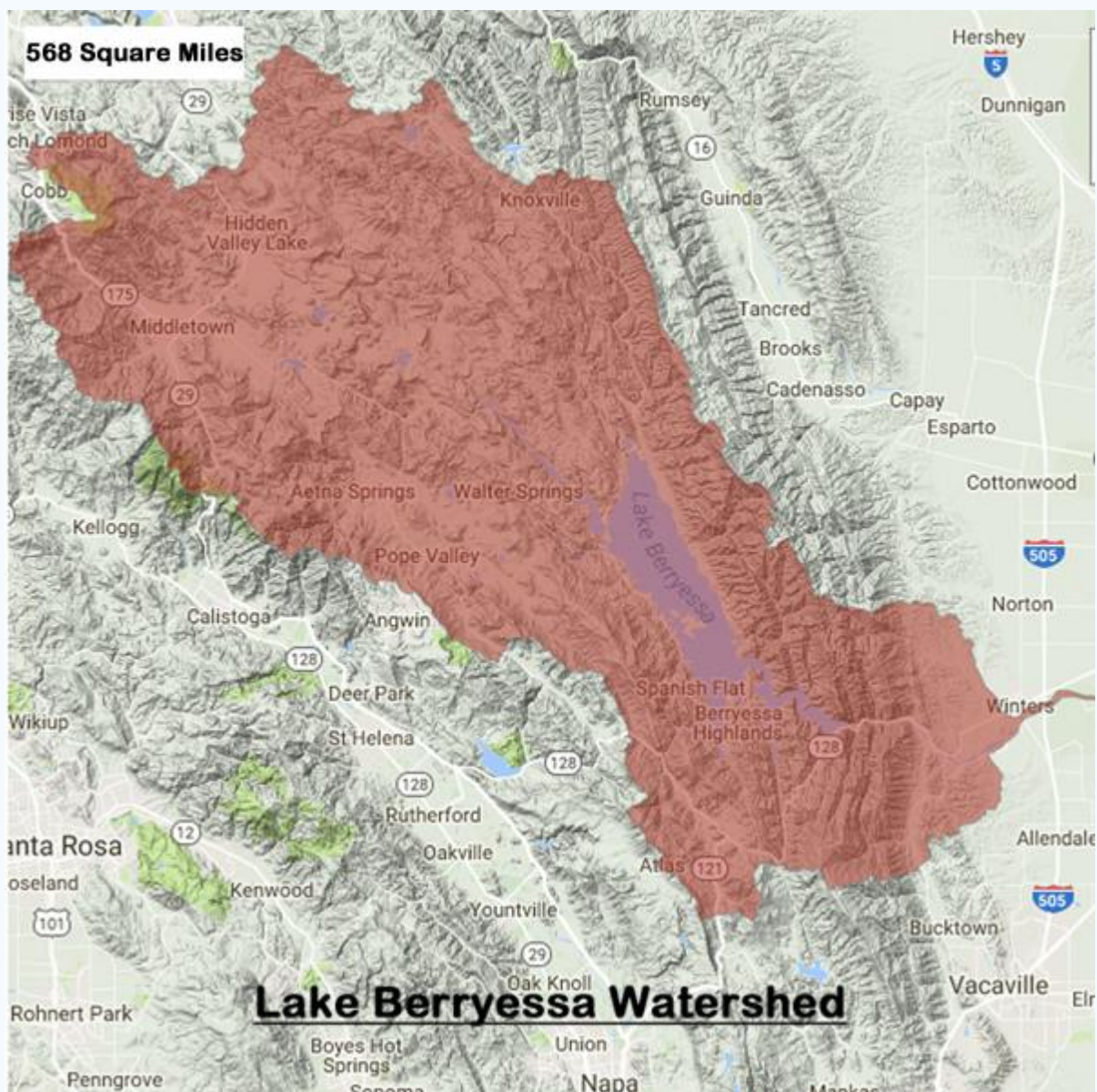
According to George Gamble, the Gamble Gauge is a float made of 10 exotic beer bottles floating in the lake opposite his house on the East Side, connected to an old tractor now at the bottom of the lake. He watches from his ranch with a telescope and calls me every day with a report! I think he's kidding. It's probably the Solano County Water Agency equipment at Monticello Dam. See the real-time details for yourself at:

www.scwamonitoring.com/LakeBerryessa/

The Gamble Gauge has risen to 51.3% capacity and continuing to rise with the lake level. The lake now holds 794,000 AF (Acre-Feet) of water. At its low point on 12/3/22 it was at 789,920 AF (50.9%). A full lake holds 1,551,300 AF. (This number used to be 1,602,000 AF but was modified after a detailed bathymetric study in 2013.)

The dam output has dropped from 700 CFS (cubic feet per second) during the summer growing season to about 55 CFS now as the need for irrigation water decreases. By law the minimum output cannot be less than 45 cfs (700 cfs = 1,388 AF/day; 55 cfs = 109 AF/day; 45 cfs = 89 AF/day) Dam output during the winter has little effect on lake levels.

The Lake Berryessa watershed encompasses the 576–square mile area primarily fed by Putah Creek which originates from springs on the eastside of Cobb Mountain in Lake County. There is no connection to Clear Lake or snowmelt from the Sierras. Putah Creek enters Napa County about 11 miles east of Middletown. It merges with Butts Creek just before it empties into Lake Berryessa. Therefore, rainfall over the Cobb Mountain and Middletown areas provides the bulk of water entering Lake Berryessa. One reason that Lake Berryessa rose so quickly in 2017 was the very heavy rainfall that occurred on Cobb Mountain and Middletown. Rainfall in 2017 at Monticello Dam was 47 inches while at Cobb Mountain it was 130+ inches.



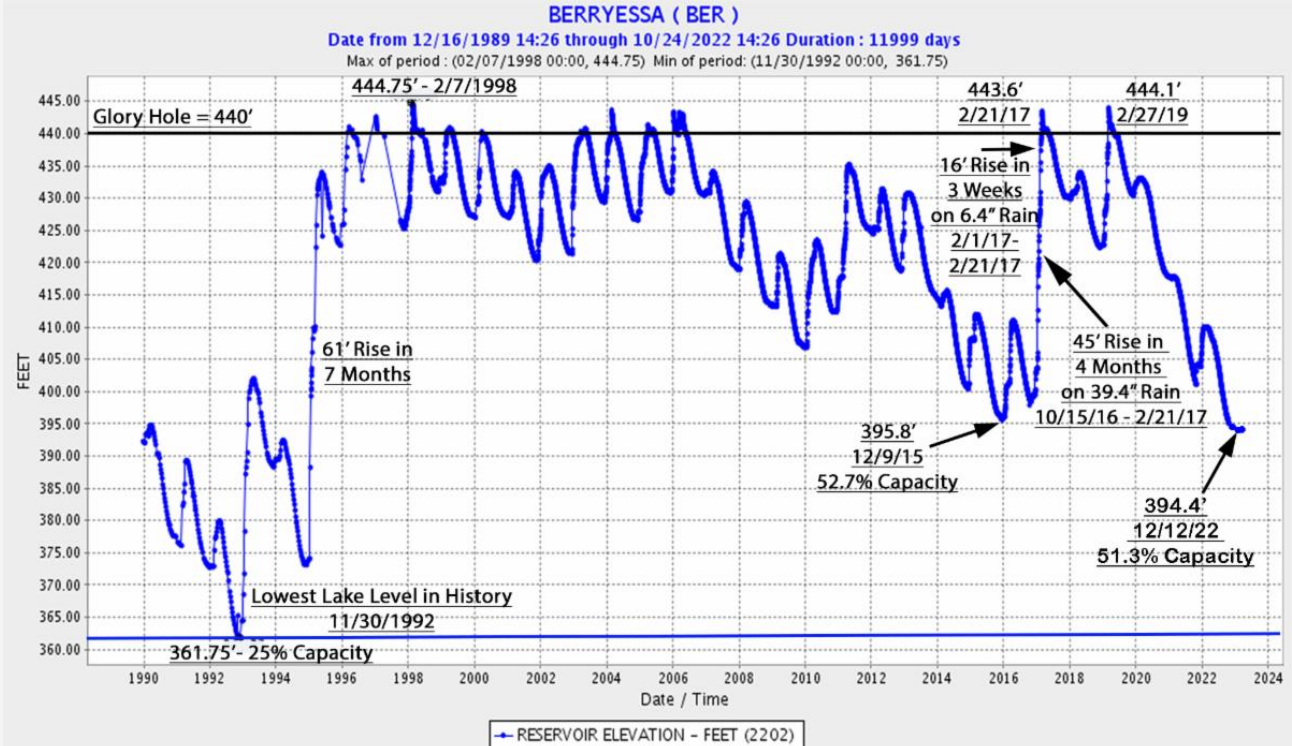
Snow on Berryessa Peak
12/12/22



Below is a view from Sugar Bowl taken today (11/12/22) by Lake Berryessa News roving editor Evan Kilkus. It's one of those "I wish I were there" photos!



The lake has started to rise from its low point - see below. The lake had stabilized at the 394.1 foot level for the last week - 45.9' below Glory Hole. This morning it was back up to 394.4' - up about 4 inches to only 45.6' below Glory Hole.



Just in Time For Christmas!
LAKE BERRYESSA TIE DYE
"The Happy Corner"

www.lakeberryessatiedye.com/



CONTACT
lakeberryessatiedye@gmail.com
jewelkenny02@gmail.com
707-580-2345
Instagram: @lakeberryessatiedye

Napachar

**Bridging wildfire defense efforts with
sustainable viniculture practices
to create a greener, more resilient Napa Valley**

Napachar aims to bridge wildfire defense efforts with sustainable viniculture practices to create a greener, more resilient Napa Valley. Napachar converts woody waste from vineyard management and local forest fuel-reduction efforts into Biochar, one of the richest soil amendments and most stable forms of carbon capture available today. Biochar is a remarkable soil amendment for grape growing. In particular, it increases grape production and grape quality by aiding water and nutrient retention in the soil. And because biochar does not degrade it does not require frequent reapplication. The increased grape production can result in a rapid return on investment.

[\(https://napachar.com/\)](https://napachar.com/)

Here's a link to a report from the Department of Water Resources with data from a 7-year experiment adding biochar to Pinot Noir vines in Salinas that saw a 30% increase in grape production:

<https://pacificbiochar.com/wp-content/uploads/Final-Oasis-Vineyard-Biochar-Field-Trial-Science-Report-2.pdf>.

Napachar Goals:

- Assist you with fire defense and fuel-reduction efforts;
 - Convert pulled vines and other woody waste into biochar on site;
 - Capture carbon and clear wood waste with minimal emissions;
 - Supply you with biochar to greatly improve your soil's water holding capacity and reduce nutrient run-off.
-
-



EVAN KILKUS
707-210-4897
Evan@CompleteWildfireDefense.com
www.CompleteWildfireDefense.com

Wildfire Risk Assessments
Defensible Space/Land Management
Home Hardening Upgrades
Water System Design & Install
Community Project Planning

The Lake Berryessa News Needs Your Support in 2023

Thanks to those of you who have already donated. We still need your donations to publish the print version of the Lake Berryessa News next year.

If you like the Lake Berryessa News in all its forms please send a donation check of \$20 (or more if you feel so inclined) made out to Peter Kilkus (not the Lake Berryessa News) and mail it to Peter Kilkus, 1515 Headlands Drive, Napa, CA 94558. If you trust the US Postal Service, you can stick a crinkly old \$20 bill in an envelope with your information and send it to the same address. You can also use Venmo or Paypal if you wish. My account is under the name Peter Kilkus. You can email me at pkilkus@gmail.com. (Note: Your donation is NOT tax deductible)

Your decision to support the Lake Berryessa News will show your vote of confidence in the future of the Lake Berryessa community. I'll continue to do my best to keep you informed about every detail affecting the lake community.

Thanks, Peter

 <p>Amber Payne Senior Sales Associate CalDRE#01302244 amberpaye@corcorangl.com www.AmberPayne.net ***** https://lakeviewhomeforsale.com</p>	 <p>Lakeview Living! 572 Putah Creek Road</p>	<p>2,200 Sq. Ft. 3 Bedrm, 2 Bath Formal living room/ dining room Open kitchen with bar seating Attached 2 car garage Prefer selling mostly furnished \$665,000</p>
<p>The ideal home to enjoy lake living life! Stunning lake and mountain views. Large deck for viewing and family BBQ's. <u>Bonus!</u> 25ft Pontoon boat and 16ft 1997 Klamath fishing boat & generator included!</p>		



Just Listed - 104 Parkview Lane

So much to this property! Nice single story home on a large flat corner lot! Spacious home with living room and family room. Open kitchen. Primary suite with upgraded tile shower with glass surround, new vanity. Kitchen with gas stove and stainless steel fridge, custom tile backsplash. Newer A/C, new siding, Washer/Dryer in Laundry Room. Outside features extra large attached 2 car garage. Boat/RV Parking and storage for gas and toys! Covered awning in rear yard with low maintenance landscaping. Water softener and filtration system, ice machine, outside speakers, outside TV. Property is graced by palm trees. Close to Steele Park Recreation area! Enjoy the lake life!

Visit www.ParkviewLn.com.

\$528,000

corcoran
GLOBAL LIVING

104 Parkview Lane, Napa



Amber Payne
1302244 (CA)
707-235-1124 (M)
amber.payne@corcorangl.com
www.AmberPayne.net

See a photo slide show at: <https://youtu.be/20XSkc4dpr8>



Amber Payne

Senior Sales Associate

CalDRE#01302244

amberpaye@corcorangl.com

Thinking of BUYING
or SELLING?

<https://lakeberryessaland.com/>

253 Sugarloaf Dr, \$87,500

1013 Arroyo Linda Ct, \$89,500

259 Sugarloaf Dr, \$87,500

1102 Arroyo Grande Dr, \$34,999

1268 Steele Canyon Rd, \$75,000

1057 Arroyo Grande Dr, \$160,000

1121 Steele Canyon Rd, \$44,000

814 Bahia Vista Ct, \$54,000

817 Bahia Vista Ct, \$44,000

1122 Rimrock Dr, \$49,900

208 Manzanita Ln, \$132,000

1032 Eastridge Dr, \$130,000

1042 Westridge Dr, \$80,000

1276 Steele Canyon Rd, \$85,000

1046 Headlands Dr, \$120,000

1053 Headlands Dr, \$60,000

Sunnyhill Ln #148, Circle Oaks, \$15,000

32 Catalpa Ct, Circle Oaks, \$56,000

www.lakelifemeetswinecountry.com

In some ways it doesn't get any better than this. This property was literally the first property sold in the Berryessa Highlands more than 50 years ago and has never been on the market. It has views, land, a beautiful home, a pool, and more.

\$1,850,000



Amber Payne
Senior Sales Associate
CalDRE#01302244
amberpaye@corcorangl.com
www.AmberPayne.net

BOAT & JET SKI RENTALS



LAKE BERRYESSA BOAT & JET SKI RENTALS



NOW RENTING TO CUSTOMERS 18 YEARS & OLDER!
Newest & Most Dependable Equipment!

**We Also Rent Tubes, Wakeboards, Skis,
Wake Surfboards & Kneeboards**

4420 Knoxville Road

Next to the Spanish Flat Village Center

Reservations Recommended

707-966-4204

lakeberryessaboats.com

BIG city speeds
with **SPECTACULAR** views.

ValleyInternet

Locally Owned
& Operated
Since 2004.

From towers on hilltops we provide high speed, reliable,
and affordable internet. Enjoy the perks of "big city"
speeds and knowledgeable techs who understand the
beautiful landscape we call home.



Connecting the Countryside.™

SCHEDULE A FREE SITE SURVEY
VALLEYINTERNET.COM
707-422-1200



BERRYESSA BOAT . JET SKI . RV REPAIR & STORAGE

4420 KNOXVILLE ROAD | 3 MIN NORTH OF SPANISH FLAT RESORT

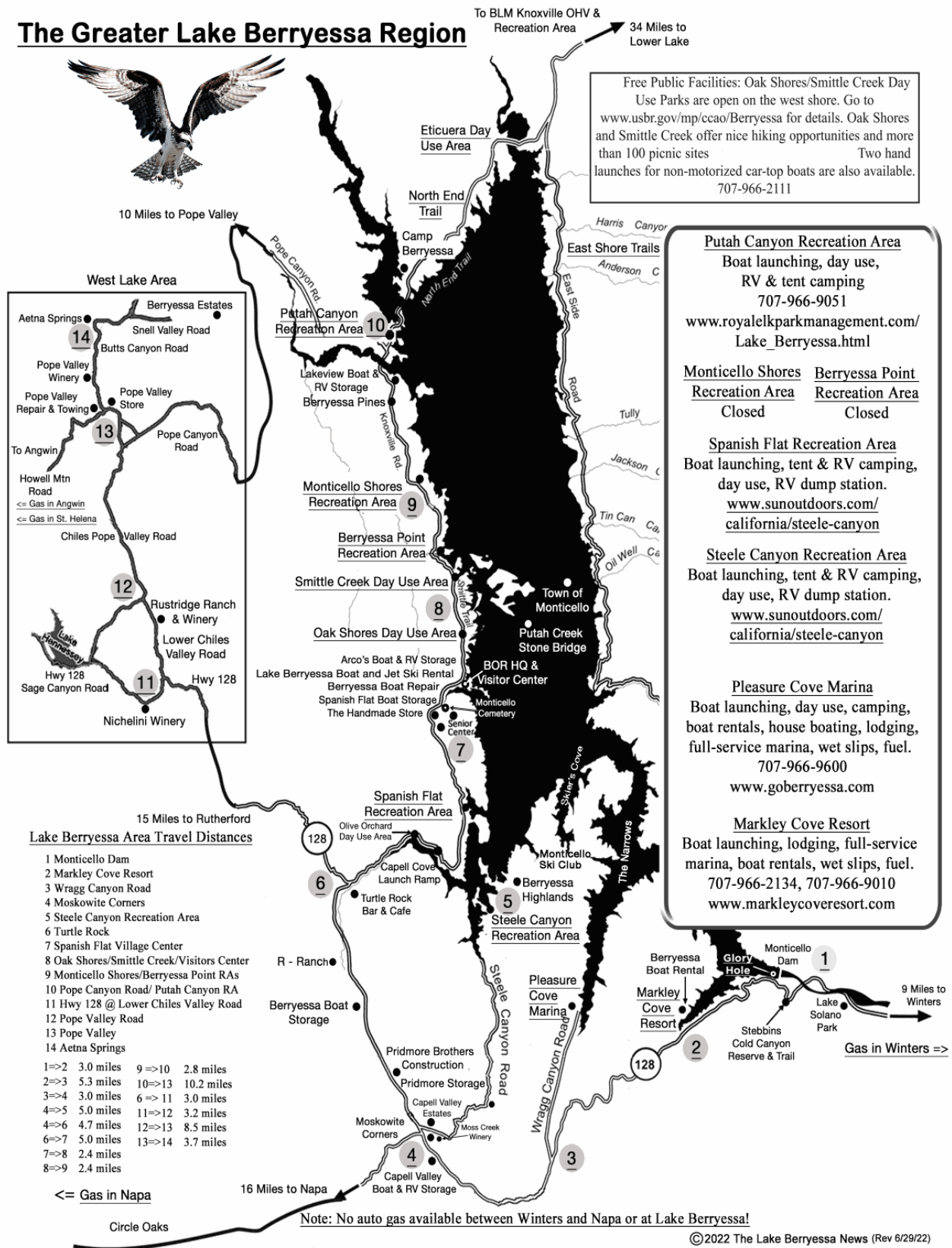
We offer quality repairs and a gated storage facility. We service all makes and models of Boats, Jet Skis, and RVs. Whether you need a basic tune up, rebuilt engine, gel coat or upholstery, we are your best choice. We are Mobile too, land or water, we can come to you! Outdoor Storage from \$50 per month is available. Our Parts Department is available to order anything you need, whether a battery or an engine. Proshop coming soon with basic boating supplies and hot new products for fun on the water!!

berryessboatrepair@gmail.com | 707.966.9954



Updated Lake Berryessa Map (June 29, 2022)

The Greater Lake Berryessa Region



Peter Kilkus | 1515 Headlands Drive, Napa, CA 94558 | 415-307-6906 | pkilkus@gmail.com

